

ANNOUNCEMENTS

OLD BUSINESS:

BUILDING IMPROVEMENT COMMITTEE:

The Building Improvement Committee recommends Plan One for the new Fellowship Hall. The new hall will double the seating capacity of what we have now. The new kitchen will be doubled in size. We will have space for freezers, ice machine and pantry storage. We will also have two additional handicap bathrooms with showers. The old kitchen will be used for stor-

age and	\$450,000.00
Benevolence.	\$275,000.00

Cost of new addition.....	\$175,000.00
---------------------------	--------------

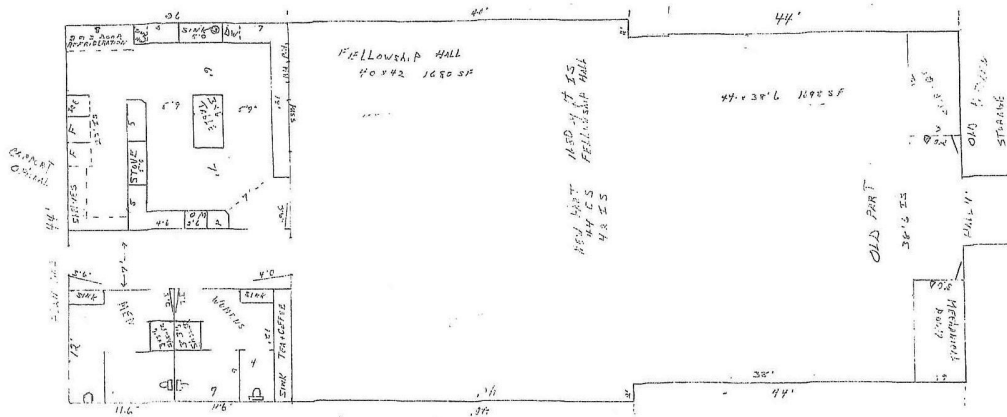
Church will provide.....	\$ 5,140.25
--------------------------	-------------

The church will have to borrow.....	\$ 350.00
-------------------------------------	-----------

2018 Budget weekly needs are now.....	\$ 5,490.25
---------------------------------------	-------------

The new addition will increase the weekly need by..

This will change the weekly needs to.....



NOTE: You can see a larger scale drawing in the Narthex.

ANNOUNCEMENTS

OLD BUSINESS:

BUILDING IMPROVEMENT COMMITTEE:

The Building Improvement Committee recommends Plan One for the new Fellowship Hall. The new hall will double the seating capacity of what we have now. The new kitchen will be doubled in size. We will have space for freezers, ice machine and pantry storage. We will also have two additional handicap bathrooms with showers. The old kitchen will be used for stor-

age and	\$450,000.00
Benevolence.	\$275,000.00

Cost of new addition.....	\$175,000.00
---------------------------	--------------

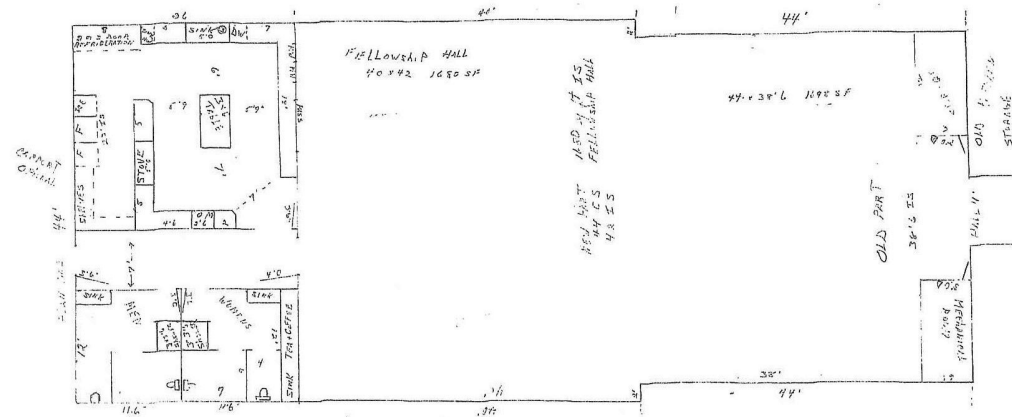
Church will provide.....	\$ 5,140.25
--------------------------	-------------

The church will have to borrow.....	\$ 350.00
-------------------------------------	-----------

2018 Budget weekly needs are now.....	\$ 5,490.25
---------------------------------------	-------------

The new addition will increase the weekly need by..

This will change the weekly needs to.....



NOTE: You can see a larger scale drawings in the Narthex.

ANNOUNCEMENTS

NEW BUSINESS:

PERSONNEL COMMITTEE:

1. The Committee recommends the approval of an updated Secretary Job Description.
2. The Personnel Committee is recommending that the mail delivery service be changed from a Post Office Box to rural delivery. A mail box will be located at the driveway on the office side of the church.

BUILDINGS & GROUNDS:

The Committee recommends the following items by disposed of by sale or donation by June 15, 2018:

1 Copier (Free) 1 Hammond Organ (Free)

Tables listed below are \$10.00 each.

2 each 8 Ft. Tables
8 each 6 Ft Tables
1 each 5 Ft Table

See Ted Fisher for further information.

ANNOUNCEMENTS

NEW BUSINESS:

PERSONNEL COMMITTEE:

1. The Committee recommends the approval of an updated Secretary Job Description.
2. The Personnel Committee is recommending that the mail delivery service be changed from a Post Office Box to rural delivery. A mail box will be located at the driveway on the office side of the church.

BUILDINGS & GROUNDS:

The Committee recommends the following items by disposed of by sale or donation by June 15, 2018:

1 Copier (Free) 1 Hammond Organ (Free)

Tables listed below are \$10.00 each.

2 each 8 Ft. Tables
8 each 6 Ft Tables
1 each 5 Ft Table

See Ted Fisher for further information.

ANNOUNCEMENTS:

WMU MISSION PROJECT: Psalm 127:3 NIV “Children are a heritage from the Lord, offspring a reward from Him.”

WMU would like you to join us in our next mission project. Care Net Peninsula is a non-profit center on mission to bring practical help and hope in Jesus to women facing pregnancy decisions. On April 15th, please pick up a baby bottle at the WMU counter in the Narthex and fill it with coins, cash or check over the next coming weeks to help support this worthy cause. Return the bottles to church by May 13th. Let's help make a difference for the women and children in our community. You may also donate baby clothes & supplies that will be distributed to the mothers. Contact Theresa Svoboda if you have any questions.

Childrens' Ministry: (Ages 4yrs old-5th grade). The children will be going to Lazer Rush in Kiln Creek Saturday April 28. We will meet at the church at 9:45am and return at 12:30pm. We will play two games and have a pizza lunch. There will be a \$5.00 deposit required per child to hold their spot. The deadline to sign up is Wednesday 25th.

Youth Ministry: (6th-12th grade). The youth will be going to Tag Time in Newport News Saturday April 28th. We will meet at the church at 6:00 pm and be returning at 8:30pm. The cost per child is \$21.50. The deadline to sign up is Wednesday, April 25th.

Sports Camp: Sports Camp is fast approaching and we need your help! There will be a meeting on Sunday, April 29th, immediately following the worship service. We need volunteers to help with advertising, snacks, registration, Bible study, craft, group leaders and station leaders. For more information contact Paige Belvin.

ANNOUNCEMENTS:

WMU MISSION PROJECT: Psalm 127:3 NIV “Children are a heritage from the Lord, offspring a reward from Him.”

WMU would like you to join us in our next mission project. Care Net Peninsula is a non-profit center on mission to bring practical help and hope in Jesus to women facing pregnancy decisions. On April 15th, please pick up a baby bottle at the WMU counter in the Narthex and fill it with coins, cash or check over the next coming weeks to help support this worthy cause. Return the bottles to church by May 13th. Let's help make a difference for the women and children in our community. You may also donate baby clothes & supplies that will be distributed to the mothers. Contact Theresa Svoboda if you have any questions.

Children's' Ministry: (Ages 4yrs old-5th grade). The children will be going to Lazer Rush in Kiln Creek Saturday April 28. We will meet at the church at 9:45 am and return at 12:30 pm. We will play two games and have a pizza lunch. There will be a \$5.00 deposit required per child to hold their spot. The deadline to sign up is Wednesday 25th.

Youth Ministry: (6th-12th grade). The youth will be going to Tag Time in Newport News Saturday April 28th. We will meet at the church at 6:00 pm and be returning at 8:30 pm. The cost per child is \$21.50. The deadline to sign up is Wednesday, April 25th.

Sports Camp: Sports Camp is fast approaching and we need your help! There will be a meeting on Sunday, April 29th, immediately following the worship service. We need volunteers to help with advertising, snacks, registration, Bible study, craft, group leaders and station leaders. For more information contact Paige Belvin.